

Suspend Deductions

Safely and Easily Suspend and Restore Payroll Deductions
Simplify Handling of Deductions in 5 week and 3 bi-week months
Avoid errors caused by manual manipulation

Suspend Deductions removes designated deductions from payroll calculation runs such as when insurance premiums are deducted only four weeks of a five week month or when a year includes 53 pay periods.

A Microsoft knowledgebase article advises users to remove (by deleting the record) the association of the deduction(s) with each earnings type. After running payroll the user should then restore each association of a deduction with an earnings type. This manual process is time consuming, prone to error, and a poor business procedure.

Suspend Deductions simplifies operations and reduces the risk of error by implementing the Microsoft recommendation in a safe, orderly and controlled manner.

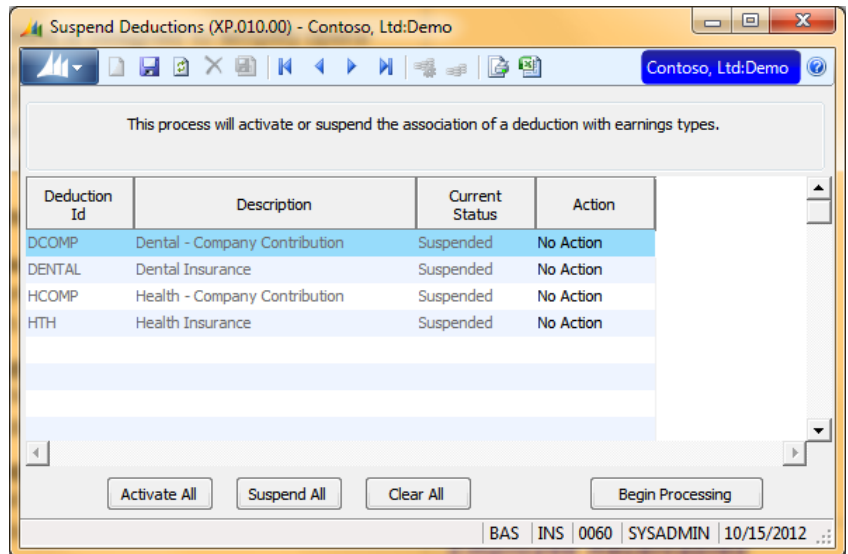
The benefits eligible for suspension are pre-specified during product setup; there is no risk that other deductions (such as withholding taxes, FICA, and SUTA) will be removed from an earnings type in error.

Suspend Deductions clearly displays the current status of deductions on the Calculation (02,500.00) screen. Uncertainty and guessing whether deductions are currently suspended is eliminated

If necessary, individual deductions can be suspended or re-activated. However, in most cases, running Suspend Deductions is as simple as selecting either "Suspend All" or "Activate All" and clicking "Begin Processing."

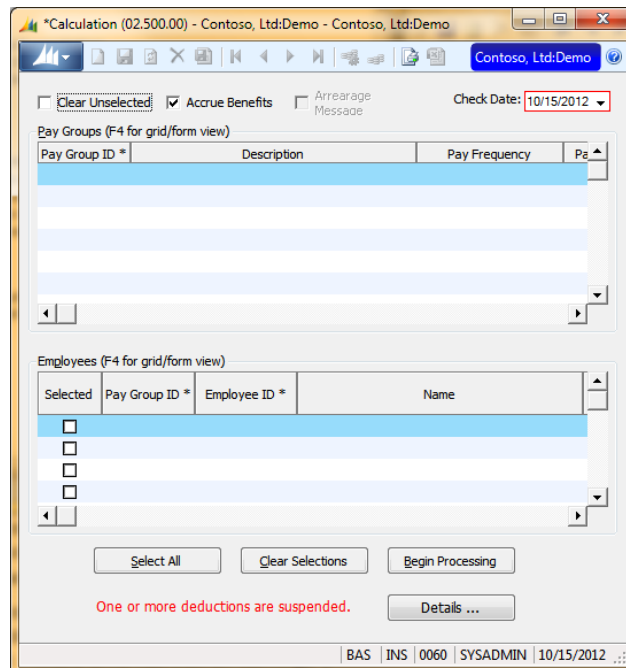
Suspend Deductions scans all earnings types for the deductions being suspended. There is no risk that an earnings type will be overlooked.

Suspend Deductions maintains a record of the deductions suspended and the earnings types they are associated with. There is no risk that an earnings type will be overlooked when deductions are restored; neither is there any risk that a deduction will be restored to an earnings type that should not be associated with the deduction.



Suspend Deductions

The Suspend Deductions screen easily suspends and re-activates deductions.



Calculation

The Suspend Deduction status is clearly displayed at the bottom of the screen.

Suspend Deductions

SILVER BROOK SYSTEMS

800-633-3013
www.silverbrook.com
Tel: 203-454-0237
Fax: 203-221-2810

Silver Brook Systems, Inc.
191 Post Road West
Westport, CT 06880

Technical Specifications

Product Type

VB Tools Application

Technical Requirements

Standard Dynamics SL/Solomon environment
Customization Manager required
for some functions

Supported Dynamics SL Versions

Microsoft Dynamics SL 2015
Microsoft Dynamics SL 2011 FP1
Microsoft Dynamics SL 2011



Microsoft, Microsoft Dynamics, Microsoft Excel and Solomon are registered trademarks of Microsoft Corporation.
Crystal Reports is a registered trademark of Business Objects.