

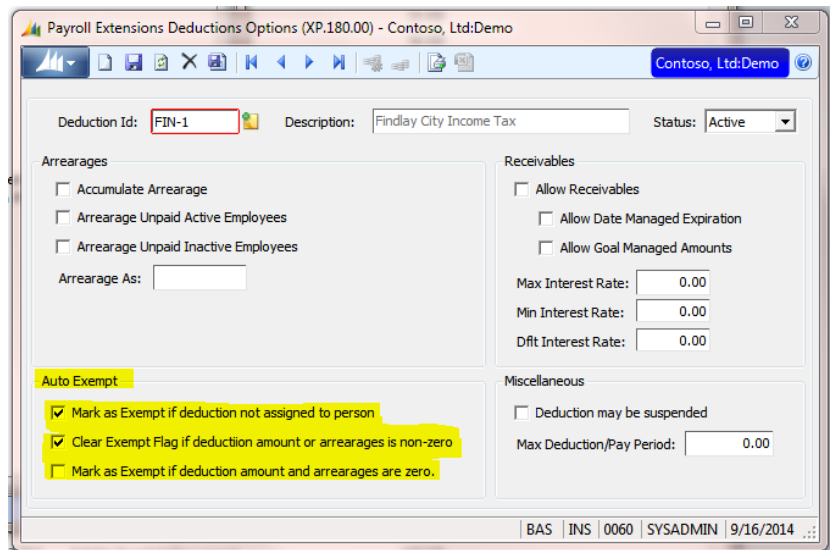
Auto-Exempt Payroll Deductions

Automatically Exempt Unenrolled Payroll Deductions
Simplify Handling of Local Taxes
Reduce Unnecessary Transaction Records

The SL payroll Calculation (02.250.00) screen automatically creates a deduction record for any deduction for which the employee does not already have a record. This method is very effective for items affecting all employees such as FICA and Medicare taxes. However this method is not effective for deductions affecting a subset of employees such as local taxes, child support and garnishments, and similar deductions.

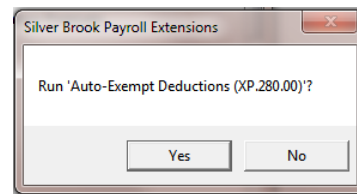
Auto-Exempt Deductions runs when Calculation (02.250.00) is started—before calculation creates employee deduction records automatically. Auto-exempt deductions performs three tasks on deductions configured for Auto-Exempt.

- An employee deduction record marking the person as exempt is created for the employee if the employee has been specifically assigned the deduction.
- Optionally, the exempt flag is cleared if an existing employee deduction record which is marked as exempt has a non-zero deduction amount or arrearage.
- Optionally, the exempt flag may be set in an existing employee deduction record if both the deduction amount specified in the "Fixed Amount/Pct/Rate column and YTD Arrearages are zero.



Auto-Exempt Setup

Auto-Exempt features are activated by deduction.



Calculation

Auto-Exempt Deductions is automatically launched by Calculation (02.250.00)

Technical Specifications

Product Type

VB Tools Application

Technical Requirements

Standard Dynamics SL environment
Customization Manager required

Supported Dynamics SL Versions

Microsoft Dynamics SL 2015
Microsoft Dynamics SL 2011 FP1
Microsoft Dynamics SL 2011

Microsoft, Microsoft Dynamics, Microsoft Excel and Solomon are registered trademarks of Microsoft Corporation. Crystal Reports is a registered trademark of Business Objects.